

"How To"?

Magaya WMS Mobile

Magaya WMS Mobile is an Application that runs in wireless handheld devices allowing the process with warehouse transactions to take place where they are executed. This way we guarantee that the inventory in Magaya WMS is always an exact image of what you actually have in the warehouse.

In this article we will describe how to execute Receive, Put-Away (Move) and Pick functions with the Magaya WMS Mobile.

To have access to these features, you must be running either, Magaya Supply Chain Solution, Magaya WMS or Magaya Commerce System.

Receive

Receiving is the process of entering into the system the merchandise arriving to the warehouse. This is the most important part of the whole process. There are two types of receiving 1) **Informed Receiving** when you know in advance what you are receiving. If you don't know in advance what you are going to receive it's called 2) **Blind Receiving**. More than 90% of the cases in a logistics business you will know in advance what you are receiving, that is why we will cover in this document only the Informed Receiving.

Informed Receiving

The process start from the PC running the Magaya Explorer

1. The employee at the office using the Magaya Explorer will create a Warehouse Receipt, which is going to be in pending state until the cargo is actually received at the warehouse.
2. Using this warehouse receipt the employee at the office will post a Receive task for employees at the warehouse, which will be retrieved by the Magaya WMS Mobile application in the Handhelds.

The process continues from the handheld device running the Magaya WMS Mobile

1. The employee using the Magaya WMS Mobile receives the Receiving task.
2. By clicking in the Receive Icon, he will be able to choose the receive task he wants to execute at that time; in case he has more than one. **Fig. 1**
3. He enters/scans the location in the warehouse where the merchandise is to be received.
4. The system will show the screen with the items to be received. From there he can start scanning the SKUs of the incoming items. In the case you are not using SKUs to identify the cargo, you can print Magaya Receiving labels from that screen. In one-way or another all cargo must be identified at the time you receive it. **Fig. 2**
5. The Location/Pallet button can be used to change the location in which you are receiving or to repack the items into a pallet. This option is very useful to later relocate all the items in the same pallet only by scanning the label of the pallet.
6. After you finished scanning all items click the finish button. If not all items were received you can take the task again later and continue receiving the remaining items.
7. The original warehouse receipt will be updated in the Magaya System with the locations and quantities of the items been received. After all items have been received, the status of the warehouse receipt will change to on-hand.



Fig. 1

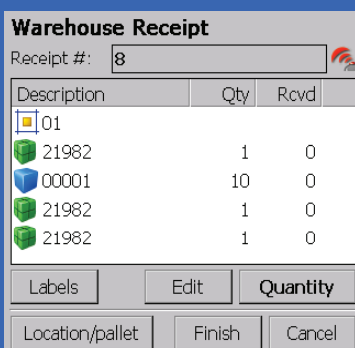


Fig. 2

"How To"? - continued**Magaya WMS Mobile****Shipping Cargo**

Pick and load are the applications used to ship cargo out of the warehouse with Magaya WMS. The Pick application will move the items from their current location to the Quality Control location (QC) or the shipping one. This task gives you the option to palletize the cargo before shipping.

The Load application is very similar to the Pick one but is intended to move the items from their current location out of the warehouse. In this application the user will not be able to palletize the items.

Pick

The process starts from the PC running the Magaya Explorer

1. The employee at the office receives the shipping instructions and creates the Shipment or Cargo Release inside the Magaya Explorer with the merchandise going out.
2. Then he creates a Pick Task from the Shipment. This will be posted to the Magaya WMS Mobile with information of the items in the shipment.

The process continues in the Handheld running the Magaya WMS Mobile

1. The employee at the warehouse selects the Pick application and accepts the assignment.

Fig. 3

2. The screen will show all locations that have items to pick. The employee will move to the location and scan the location barcode. **Fig. 4**

3. A screen will show the items to scan in the selected location. The user will start scanning the items. **Fig. 5**

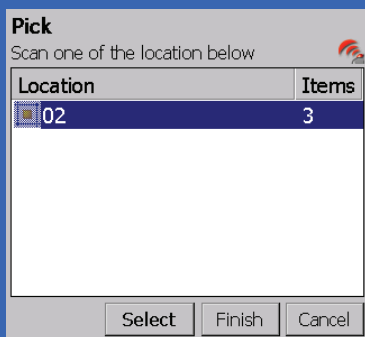
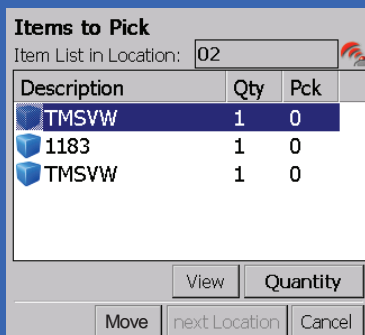
4. After scanning enough items, the user will use the move button to move the items into the QC location or the shipping door in case he is doing a pick directly to the truck. **Fig. 5**

5. Go back to step 2 until you finish with all items.

6. The system will be updated with the new location of the items moved.

7. At this moment, the manager can verify the outgoing merchandise and print the Magaya Shipping Labels.

The Load function is very similar to the Pick function but for simplicity in this article will only cover the pick.

**Fig. 3****Fig. 4****Fig. 5**

"How To"? - continued

Magaya WMS Mobile

Put Away (Move)

The Move is the application used when you want to relocate your commodities in the warehouse. The Move application is not intended to ship cargo out of the warehouse.

There are two types of Move:

1. Informed Move when the move task is posted from an employee using the Magaya Explorer to an employee using a handheld running the Magaya WMS Mobile.
2. Manual Move when the movement operation is initiated directly from the handheld device. The more commonly used is the Manual Move and is the one we are covering in this article.

Manual Move

It is very simple, the screen will guide you thru the process:

1. Select the Manual Move application in the main Magaya WMS Mobile screen. **Fig. 6**
2. Scan or enter the location or the pallet where the commodities that you want to move are.
3. Scan the items you want to move out of the previously scanned location or pallet.
4. Move the items to the destination location or pallet.
5. Scan or enter the destination pallet if you are palletizing.
6. Scan or enter the destination location to complete the movement.

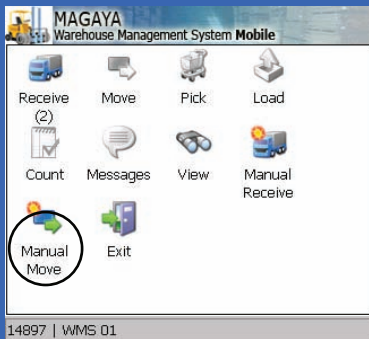


Fig. 6